

# Ivy 2 - floor 1

## apt. 1 | 132 m² | **SOLD**

- 1. living room - 25 m²
- 2. balcony - 13.5 m²
- 3. kitchen - 17.5 m²
- 4. hall - 13 m²
- 5. guest bathroom - 3 m²
- 6. master suite - 13 m²
- 7. bathroom - 4.5 m²
- 8. bedroom - 15 m²
- 9. bathroom - 4.5 m²
- 10. bedroom - 10 m²

## apt. 3 | 113 m² | **SOLD**

- 1. living room - 29 m²
- 2. balcony - 7.5 m²
- 3. kitchen - 10.5 m²
- 4. hall - 15 m²
- 5. guest bathroom - 4.5 m²
- 6. bedroom - 13.5 m²
- 7. master suite - 14 m²
- 8. bathroom - 6 m²
- 9. walk-in closet - 5.5 m²
- 10. storage room - 4.5 m²

## apt. 2 | 103 m² | **SOLD**

- 1. living room - 40 m²
- 2. balcony - 9.5 m²
- 3. kitchen - 9 m²
- 4. hall - 3.5 m²
- 5. guest bathroom - 4 m²
- 6. bedroom - 23.5 m²
- 7. bathroom - 8.5 m²
- 8. storage room - 2.5 m²

## common areas

- 1. stairway - 18 m²
- 2. technical room - 8 m²
- 3. hall - 28 m²
- 4. sorted garbage room - 2.5 m²



### note

- 1. The curving and bending walls help to visually enlarge the space and bring a sense of flow and energy.
- 2. Our professional team draws the interior walls of the apartment in accordance with international standards, ensuring proper space distribution.
- 3. The interior major walls are missing due to the building's professional design. This provides you the freedom to lay the walls in any way you wish

# Ivy 2 - floor 2

## apt. 4 | 140 m² | SOLD

- 1. living room - 41 m²
- 2. balcony - 14 m²
- 3. kitchen - 8 m²
- 4. hall - 12 m²
- 5. guest bathroom - 3.5 m²
- 6. master suite - 14.5 m²
- 7. bathroom - 6.5 m²
- 8. walk-in closet - 4.5 m²
- 9. bedroom - 13 m²
- 10. bathroom - 7 m²
- 11. storage room - 4 m²

## apt. 5 | 192 m² | SOLD

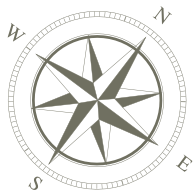
- 1. living room - 25 m²
- 2. balcony - 15.5 m²
- 3. kitchen - 14.5 m²
- 4. hall - 23.5 m²
- 5. guest bathroom - 3.5 m²
- 6. bedroom - 26 m²
- 7. master suite - 33 m²
- 8. bathroom - 5 m²
- 9. bedroom - 13 m²
- 10. bedroom - 15 m²
- 11. bathroom - 4 m²
- 12. storage room - 3.5 m²

## apt. 6 | 76 m² | SOLD

- 1. living room - 30 m²
- 2. balcony - 7 m²
- 3. kitchen - 8 m²
- 4. hall - 7 m²
- 5. bedroom - 13.5 m²
- 6. bathroom - 4.5 m²
- 7. walk-in closet - 3.5 m²

## common areas

- 1. stairway - 18 m²
- 2. technical room - 9.5 m²
- 3. hall - 19 m²
- 4. sorted garbage room - 2.5 m²



AMANOO  
BY  
KHAKHAMYAN  
*heritage*



### note

- 1. The curving and bending walls help to visually enlarge the space and bring a sense of flow and energy.
- 2. Our professional team draws the interior walls of the apartment in accordance with international standards, ensuring proper space distribution.
- 3. The interior major walls are missing due to the building's professional design. This provides you the freedom to lay the walls in any way you wish

# Ivy 2 - floor 3

## apt. 7 | 143 m² | SOLD

- 1. living room - 41 m²
- 2. balcony - 14 m²
- 3. kitchen - 6 m²
- 4. hall - 21 m²
- 5. guest bathroom - 3.5 m²
- 9. bedroom - 14.5 m²
- 10. bathroom - 8 m²
- 11. walk-in closet - 9 m²

## apt. 8 | 92 m²

- 1. living room - 18 m²
- 2. balcony - 12 m²
- 3. kitchen - 9 m²
- 4. hall - 8.5 m²
- 5. guest bathroom - 3.5 m²
- 6. bedroom - 10 m²
- 7. bedroom - 25.5 m²
- 8. bathroom - 5.5 m²

## apt. 9 | 85 m²

- 1. living room - 23.5 m²
- 2. balcony - 10.5 m²
- 3. kitchen - 9.5 m²
- 4. hall - 16.5 m²
- 5. guest bathroom - 5 m²
- 6. bedroom - 14.5 m²
- 7. bathroom - 5.5 m²

## apt. 10 | 74 m² | SOLD

- 1. living room - 26 m²
- 2. balcony - 8.5 m²
- 3. kitchen - 7 m²
- 4. hall - 8 m²
- 5. guest bathroom - 5.5 m²
- 6. bedroom - 16.5 m²
- 7. bathroom - 5 m²

## common areas

- 1. stairway - 18 m²
- 2. technical room - 9.5 m²
- 3. hall - 19 m²
- 4. sorted garbage room - 2.5 m²



AMANOO  
BY  
KHAKHAMYAN  
*heritage*

G. Hovsepyan 38/11, Yerevan 0011  
+374 91 00 01 07, +374 33 03 11 00  
amanoo.am  
info@amanoo.am



### note

- 1. The curving and bending walls help to visually enlarge the space and bring a sense of flow and energy.
- 2. Our professional team draws the interior walls of the apartment in accordance with international standards, ensuring proper space distribution.
- 3. The interior major walls are missing due to the building's professional design. This provides you the freedom to lay the walls in any way you wish



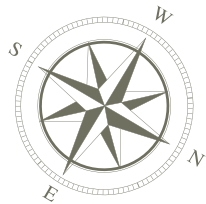
# Ivy 2 - floor 4

apt. 11 | 430 m²

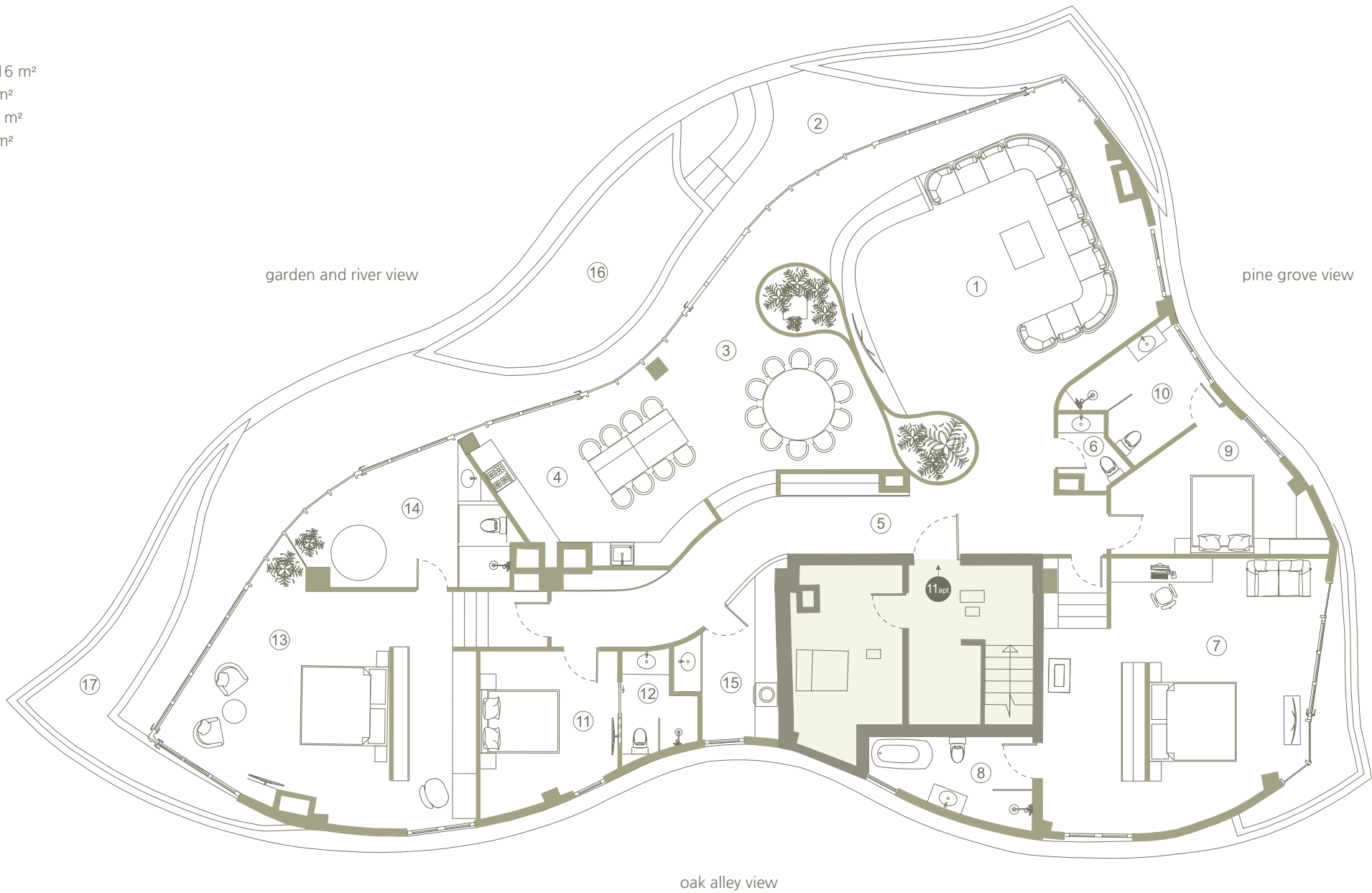
- 1. living room - 80 m²
- 2. balcony - 45 m²
- 3. dining room - 30 m²
- 4. kitchen - 25 m²
- 5. hall - 24 m²
- 6. guest bathroom - 3.5 m²
- 7. bedroom - 48.5 m²
- 8. bathroom - 9 m²
- 9. bedroom - 14 m²
- 10. bathroom - 7.5 m²
- 11. bedroom - 14 m²
- 12. bath - 4.5 m²
- 13. master suite - 55 m²
- 14. master bathroom - 16 m²
- 15. laundry room - 8.5 m²
- 16. swimming pool - 19 m²
- 17. flower garden - 26 m²

common areas

- 1. stairway - 12 m²
- 2. technical room - 8 m²



AMANOO  
BY  
KHAKHAMYAN  
*heritage*



## note

- 1. The curving and bending walls help to visually enlarge the space and bring a sense of flow and energy.
- 2. Our professional team draws the interior walls of the apartment in accordance with international standards, ensuring proper space distribution.
- 3. The interior major walls are missing due to the building's professional design. This provides you the freedom to lay the walls in any way you wish