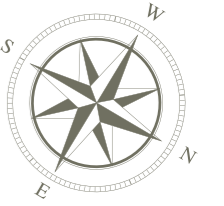


# Ivy 1 - floor 1



## apt. 1 | 134 m<sup>2</sup> | SOLD

1. living room - 40 m<sup>2</sup>
2. balcony - 10 m<sup>2</sup>
3. kitchen - 10 m<sup>2</sup>
4. hall - 10 m<sup>2</sup>
5. guest bathroom - 2.5 m<sup>2</sup>
6. bedroom - 16.5 m<sup>2</sup>
7. bathroom - 5.5 m<sup>2</sup>
8. master suite - 14.5 m<sup>2</sup>
9. bathroom - 6.5 m<sup>2</sup>
10. walk-in closet - 4.5 m<sup>2</sup>
11. storage room - 6.5 m<sup>2</sup>

## apt. 2 | 94 m<sup>2</sup> | SOLD

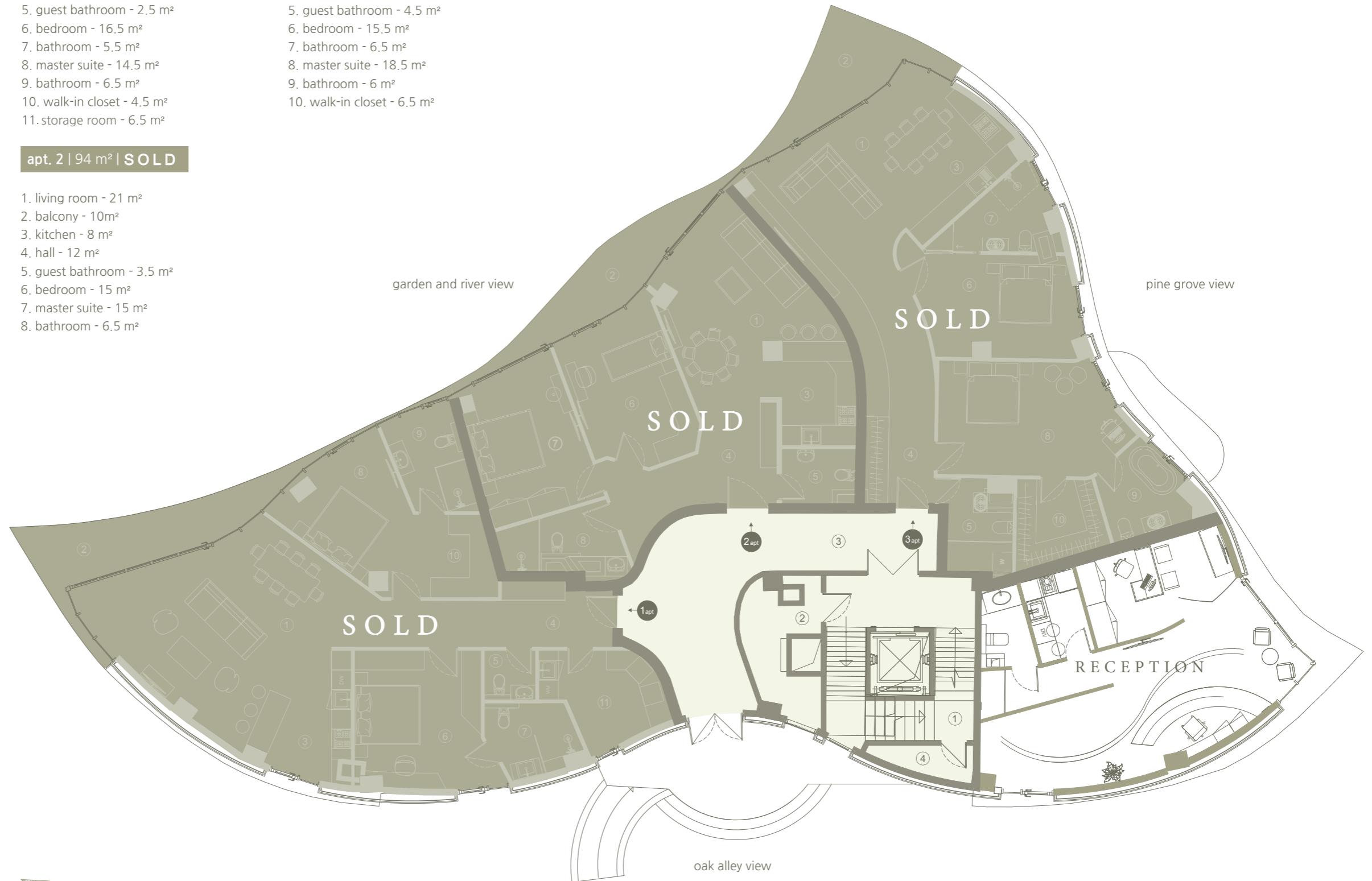
1. living room - 21 m<sup>2</sup>
2. balcony - 10 m<sup>2</sup>
3. kitchen - 8 m<sup>2</sup>
4. hall - 12 m<sup>2</sup>
5. guest bathroom - 3.5 m<sup>2</sup>
6. bedroom - 15 m<sup>2</sup>
7. master suite - 15 m<sup>2</sup>
8. bathroom - 6.5 m<sup>2</sup>

## apt. 3 | 120 m<sup>2</sup> | SOLD

1. living room - 24.5 m<sup>2</sup>
2. balcony - 10.5 m<sup>2</sup>
3. kitchen - 8.5 m<sup>2</sup>
4. hall - 14.5 m<sup>2</sup>
5. guest bathroom - 4.5 m<sup>2</sup>
6. bedroom - 15.5 m<sup>2</sup>
7. bathroom - 6.5 m<sup>2</sup>
8. master suite - 18.5 m<sup>2</sup>
9. bathroom - 6 m<sup>2</sup>
10. walk-in closet - 6.5 m<sup>2</sup>

## common areas

1. stairway - 18 m<sup>2</sup>
2. technical room - 8 m<sup>2</sup>
3. hall - 28.5 m<sup>2</sup>
4. sorted garbage room - 2.5 m<sup>2</sup>



AMANO

BY  
KHAKHAMYAN  
*heritage*



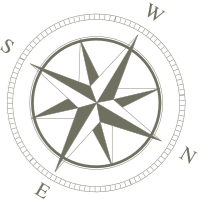
## note

1. The curving and bending walls help to visually enlarge the space and bring a sense of flow and energy.
2. Our professional team draws the interior walls of the apartment in accordance with international standards, ensuring proper space distribution.
3. The interior major walls are missing due to the building's professional design. This provides you the freedom to lay the walls in any way you wish

G. Hovsepyan 38/11, Yerevan 0011  
+374 91 00 01 07, +374 33 03 11 00

amanoo.am  
info@amanoo.am

# Ivy 1 - floor 2



## apt. 4 | 123 m<sup>2</sup> | SOLD

1. living room - 30.5 m<sup>2</sup>
2. balcony - 15 m<sup>2</sup>
3. kitchen - 10 m<sup>2</sup>
4. hall - 12.5 m<sup>2</sup>
5. master suite - 22 m<sup>2</sup>
6. master bathroom - 7 m<sup>2</sup>
7. bedroom - 15.5 m<sup>2</sup>
8. bathroom - 6 m<sup>2</sup>

## apt. 6 | 105 m<sup>2</sup> | SOLD

1. living room - 33.5 m<sup>2</sup>
2. balcony - 5m<sup>2</sup>
3. kitchen - 9.5 m<sup>2</sup>
4. hall - 9.5 m<sup>2</sup>
5. bathroom - 6.5 m<sup>2</sup>
6. bedroom - 11m<sup>2</sup>
7. master suite - 12.5 m<sup>2</sup>
8. master bathroom - 5.5 m<sup>2</sup>
9. walk-in closet - 4 m<sup>2</sup>
10. storage room - 4.5 m<sup>2</sup>

## apt. 7 | 71 m<sup>2</sup> | SOLD

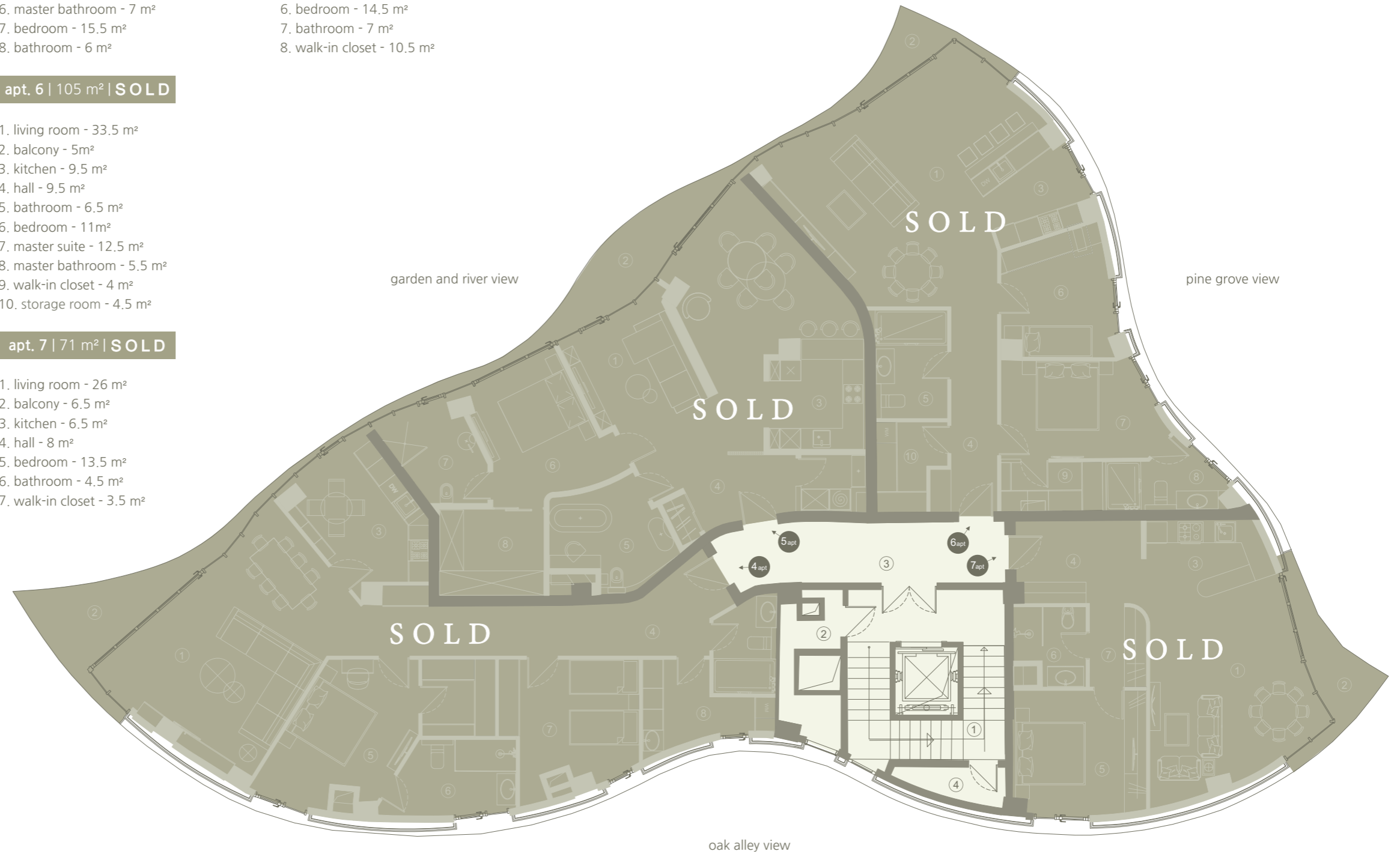
1. living room - 26 m<sup>2</sup>
2. balcony - 6.5 m<sup>2</sup>
3. kitchen - 6.5 m<sup>2</sup>
4. hall - 8 m<sup>2</sup>
5. bedroom - 13.5 m<sup>2</sup>
6. bathroom - 4.5 m<sup>2</sup>
7. walk-in closet - 3.5 m<sup>2</sup>

## apt. 5 | 110 m<sup>2</sup> | SOLD

1. living room - 18 m<sup>2</sup>
2. balcony - 13 m<sup>2</sup>
3. kitchen - 6.5 m<sup>2</sup>
4. hall - 13 m<sup>2</sup>
5. guest bathroom - 4.5 m<sup>2</sup>
6. bedroom - 14.5 m<sup>2</sup>
7. bathroom - 7 m<sup>2</sup>
8. walk-in closet - 10.5 m<sup>2</sup>

## common areas

1. stairway - 18 m<sup>2</sup>
2. technical room - 8 m<sup>2</sup>
3. hall - 28.5 m<sup>2</sup>
4. sorted garbage room - 2.5 m<sup>2</sup>



AMANO

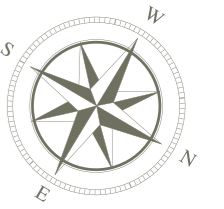
BY  
KHAKHAMYAN  
*heritage*



### note

1. The curving and bending walls help to visually enlarge the space and bring a sense of flow and energy.
2. Our professional team draws the interior walls of the apartment in accordance with international standards, ensuring proper space distribution.
3. The interior major walls are missing due to the building's professional design. This provides you the freedom to lay the walls in any way you wish

# Ivy 1 - floor 3



## apt. 8 | 154 m<sup>2</sup> | SOLD

1. living room - 29 m<sup>2</sup>
2. balcony - 20 m<sup>2</sup>
3. kitchen - 12 m<sup>2</sup>
4. hall - 15 m<sup>2</sup>
5. guest bathroom - 7.5 m<sup>2</sup>
6. master suite - 27 m<sup>2</sup>
7. bathroom - 6.5 m<sup>2</sup>
8. bedroom - 16 m<sup>2</sup>
9. bedroom - 16 m<sup>2</sup>
10. storage room - 9 m<sup>2</sup>

## apt. 9 | 92 m<sup>2</sup> | SOLD

1. living room - 20 m<sup>2</sup>
2. balcony - 10 m<sup>2</sup>
3. kitchen - 5 m<sup>2</sup>
4. hall - 10 m<sup>2</sup>
5. guest bathroom - 5 m<sup>2</sup>
6. bedroom - 12.5 m<sup>2</sup>
7. bedroom - 22 m<sup>2</sup>
8. bathroom - 3.5 m<sup>2</sup>

## common areas

1. stairway - 18 m<sup>2</sup>
2. technical room - 9.5 m<sup>2</sup>
3. hall - 19 m<sup>2</sup>
4. sorted garbage room - 2.5 m<sup>2</sup>

## apt. 10 | 99 m<sup>2</sup> | SOLD

1. living room - 31 m<sup>2</sup>
2. balcony - 8.5 m<sup>2</sup>
3. kitchen - 10.5 m<sup>2</sup>
4. hall - 8.5 m<sup>2</sup>
5. bathroom - 6 m<sup>2</sup>
6. bedroom - 9 m<sup>2</sup>
7. walk-in closet - 4 m<sup>2</sup>
8. master suite - 16.5 m<sup>2</sup>
9. bathroom - 5.5 m<sup>2</sup>

## apt. 11 | 75 m<sup>2</sup> | SOLD

1. living room - 16.5 m<sup>2</sup>
2. balcony - 9 m<sup>2</sup>
3. kitchen - 16.5 m<sup>2</sup>
4. hall - 8 m<sup>2</sup>
5. bedroom - 26 m<sup>2</sup>
6. bathroom - 7 m<sup>2</sup>
7. walk-in closet - 5.5 m<sup>2</sup>



AMANO

BY  
KHAKHAMYAN  
*heritage*



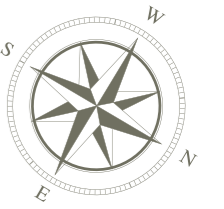
## note

1. The curving and bending walls help to visually enlarge the space and bring a sense of flow and energy.
2. Our professional team draws the interior walls of the apartment in accordance with international standards, ensuring proper space distribution.
3. The interior major walls are missing due to the building's professional design. This provides you the freedom to lay the walls in any way you wish

G. Hovsepyan 38/11, Yerevan 0011  
+374 91 00 01 07, +374 33 03 11 00

amanoo.am  
info@amanoo.am

# Ivy 1 - floor 4



## apt. 12 | 120 m<sup>2</sup>

1. living room - 34 m<sup>2</sup>
2. balcony - 8 m<sup>2</sup>
3. kitchen - 10.5 m<sup>2</sup>
4. hall - 19 m<sup>2</sup>
5. bedroom - 19.5 m<sup>2</sup>
7. bathroom - 5 m<sup>2</sup>
8. bedroom - 13 m<sup>2</sup>
9. bathroom - 5 m<sup>2</sup>

## apt. 13 | 114 m<sup>2</sup> | SOLD

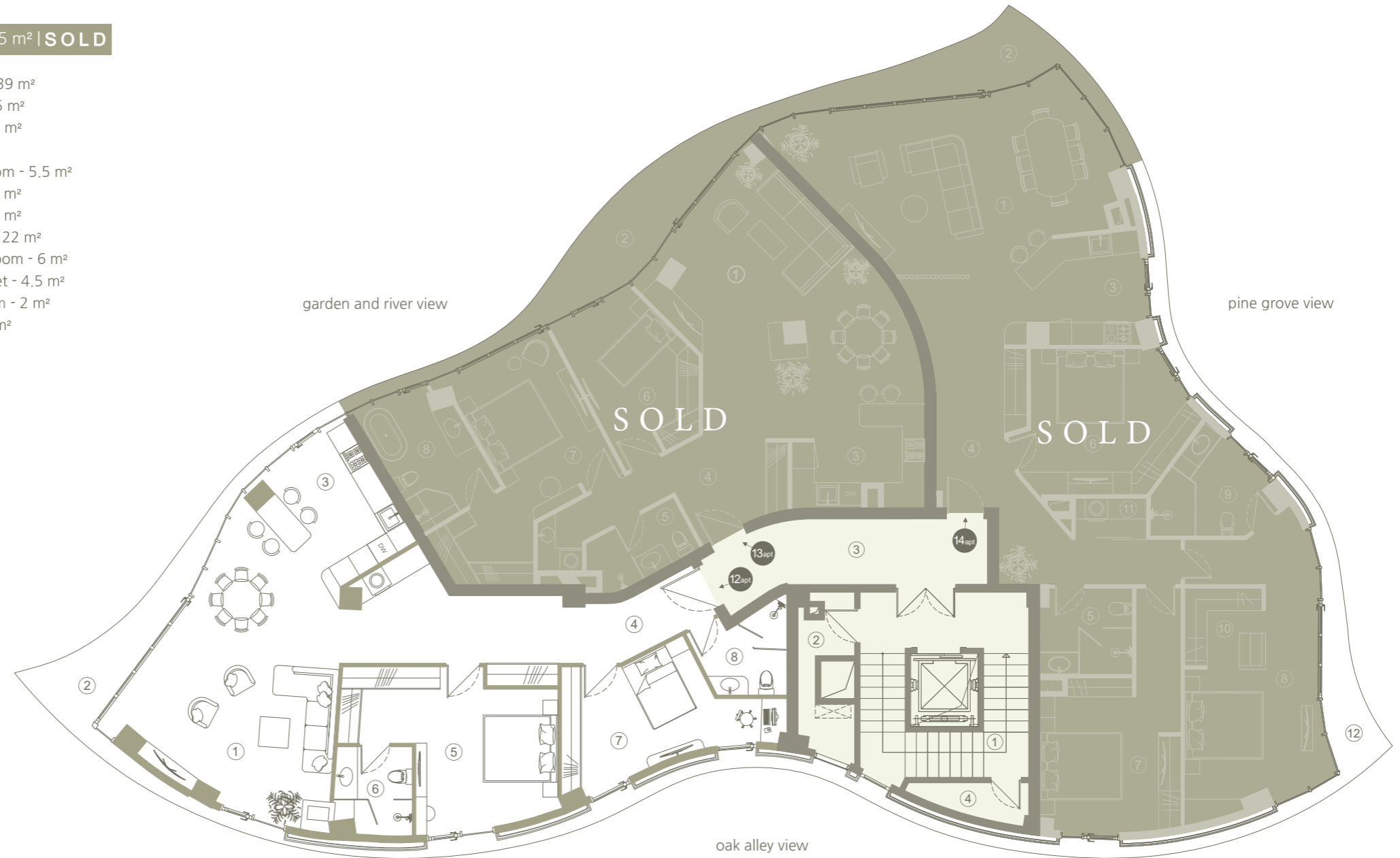
1. living room - 35.5 m<sup>2</sup>
2. balcony - 10 m<sup>2</sup>
3. kitchen - 8.5 m<sup>2</sup>
4. hall - 11.5 m<sup>2</sup>
5. guest bathroom - 4 m<sup>2</sup>
6. bedroom - 12 m<sup>2</sup>
7. master suite - 18.5 m<sup>2</sup>
8. bathroom - 8.5 m<sup>2</sup>

## common areas

1. stairway - 18 m<sup>2</sup>
2. technical room - 9.5 m<sup>2</sup>
3. hall - 19 m<sup>2</sup>
4. sorted garbage room - 2.5 m<sup>2</sup>

## apt. 14 | 164.5 m<sup>2</sup> | SOLD

1. living room - 39 m<sup>2</sup>
2. balcony - 10.5 m<sup>2</sup>
3. kitchen - 10.5 m<sup>2</sup>
4. hall - 17 m<sup>2</sup>
5. guest bathroom - 5.5 m<sup>2</sup>
6. bedroom - 17 m<sup>2</sup>
7. bedroom - 18 m<sup>2</sup>
8. master suite - 22 m<sup>2</sup>
9. master bathroom - 6 m<sup>2</sup>
10. walk-in closet - 4.5 m<sup>2</sup>
11. storage room - 2 m<sup>2</sup>
12. balcony - 7 m<sup>2</sup>



AMANOO

BY  
KHAKHAMYAN  
*heritage*



### note

1. The curving and bending walls help to visually enlarge the space and bring a sense of flow and energy.
2. Our professional team draws the interior walls of the apartment in accordance with international standards, ensuring proper space distribution.
3. The interior major walls are missing due to the building's professional design. This provides you the freedom to lay the walls in any way you wish

G. Hovsepyan 38/11, Yerevan 0011  
+374 91 00 01 07, +374 33 03 11 00

amanoo.am  
info@amanoo.am

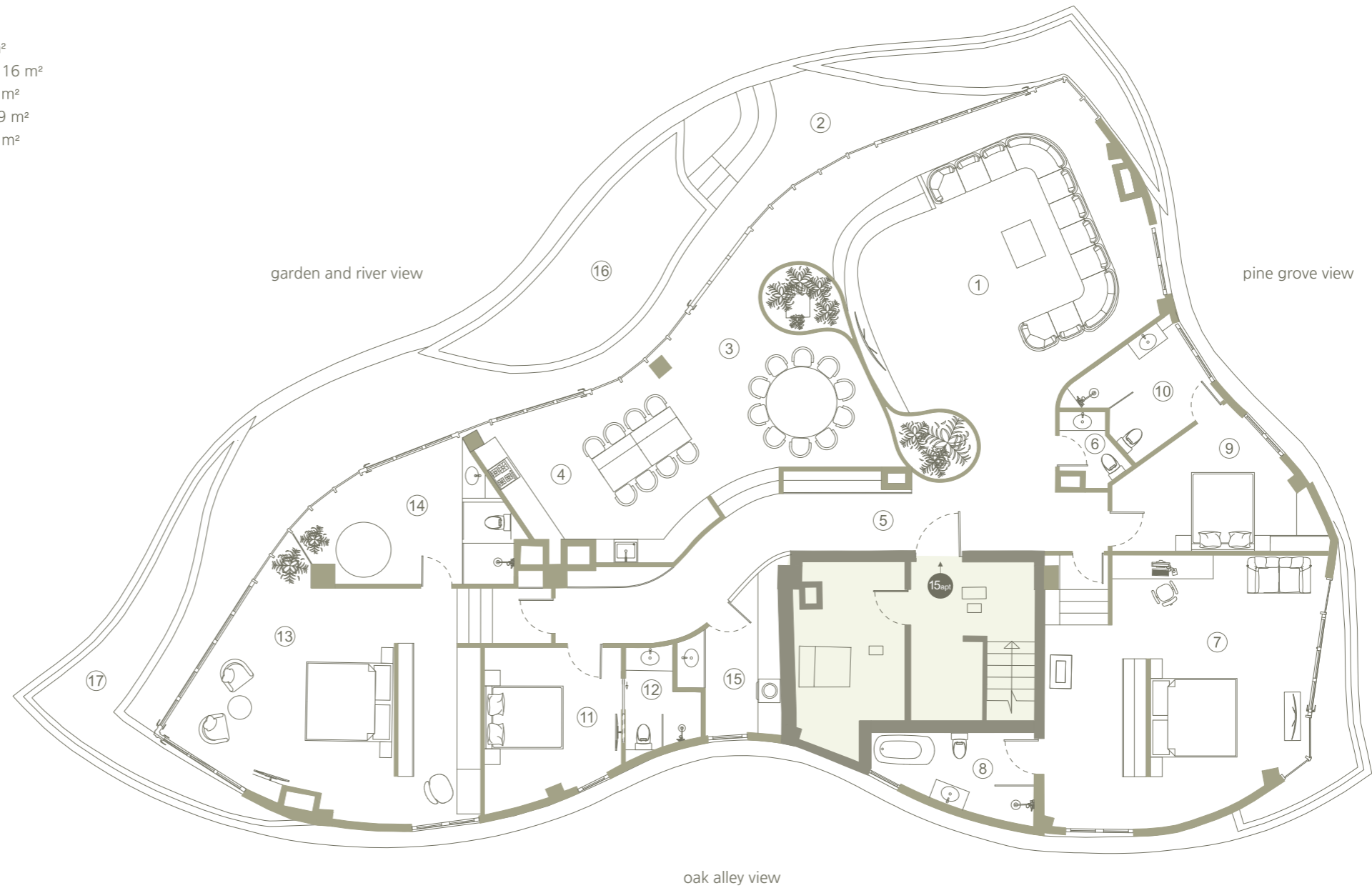
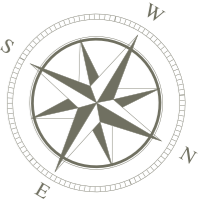
# Ivy 1 - floor 5

apt. 15 | 430 m<sup>2</sup>

1. living room - 80 m<sup>2</sup>
2. balcony - 45 m<sup>2</sup>
3. dining room - 30 m<sup>2</sup>
4. kitchen - 25 m<sup>2</sup>
5. hall - 24 m<sup>2</sup>
6. guest bathroom - 3.5 m<sup>2</sup>
7. bedroom - 48.5 m<sup>2</sup>
8. bathroom - 9 m<sup>2</sup>
9. bedroom - 14 m<sup>2</sup>
10. bathroom - 7.5 m<sup>2</sup>
11. bedroom - 14 m<sup>2</sup>
12. bath - 4.5 m<sup>2</sup>
13. master suite - 55 m<sup>2</sup>
14. master bathroom - 16 m<sup>2</sup>
15. laundry room - 8.5 m<sup>2</sup>
16. swimming pool - 19 m<sup>2</sup>
17. flower garden - 26 m<sup>2</sup>

common areas

1. stairway - 12 m<sup>2</sup>
2. technical room - 8 m<sup>2</sup>



AMANO

BY  
KHAKHAMYAN  
*heritage*



## note

1. The curving and bending walls help to visually enlarge the space and bring a sense of flow and energy.
2. Our professional team draws the interior walls of the apartment in accordance with international standards, ensuring proper space distribution.
3. The interior major walls are missing due to the building's professional design. This provides you the freedom to lay the walls in any way you wish

G. Hovsepyan 38/11, Yerevan 0011  
+374 91 00 01 07, +374 33 03 11 00

amanoo.am  
info@amanoo.am