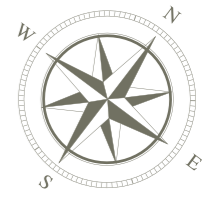


Ivy 3 - floor 1



apt. 1 | 153 m²

1. living room - 46.5 m²
2. balcony - 42.5 m²
3. kitchen - 9 m²
4. hall - 7 m²
5. guest bathroom - 6.5 m²
6. bedroom - 22 m²
7. bathroom - 6 m²
8. walk-in closet - 5.5 m²
9. storage room - 4.5 m²

apt. 2 | 106 m²

1. living room - 12 m²
2. balcony - 12.5 m²
3. kitchen - 9 m²
4. hall - 12 m²
5. guest bathroom - 2.5 m²
6. bedroom - 15 m²
7. bedroom - 17.5 m²
8. bathroom - 6 m²
9. walk-in closet - 4 m²

apt. 3 | 134 m² | SOLD

1. living room - 31.5 m²
2. balcony - 30 m²
3. kitchen - 6 m²
4. hall - 17 m²
5. guest bathroom - 4 m²
6. bedroom - 17 m²
7. bathroom - 7 m²
8. bedroom - 16 m²

common areas

1. stairway - 19 m²
2. technical room - 13 m²
3. hall - 18 m²



AMANO

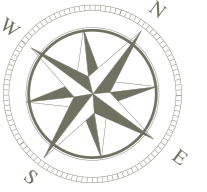
BY
K H A K H A M Y A N
heritage



note

1. The curving and bending walls help to visually enlarge the space and bring a sense of flow and energy.
2. Our professional team draws the interior walls of the apartment in accordance with international standards, ensuring proper space distribution.
3. The interior major walls are missing due to the building's professional design. This provides you the freedom to lay the walls in any way you wish

Ivy 3 - floor 2



apt. 4 | 272 m²

1. living room - 40 m²
2. balcony - 11.5 m²
3. kitchen - 16.5 m²
4. hall - 8 m²
5. guest bathroom - 4 m²
6. bedroom - 21.5 m²
7. bedroom - 14.5 m²
8. bathroom - 7.5 m²
9. master suite - 29.5 m²
10. bathroom - 6.5 m²
11. walk-in closet - 7.5 m²
12. storage room - 7.5 m²
13. balcony - 12.5 m²
14. balcony - 54.5 m²

common areas

1. stairway - 20.5 m²
2. technical room - 3.5 m²
3. hall - 17.5 m²

apt. 5 | 107 m²

1. living room - 32.5 m²
2. balcony - 25 m²
3. kitchen - 8 m²
4. hall - 11 m²
5. guest bathroom - 3 m²
6. bedroom - 15.5 m²
7. bathroom - 5 m²



AMANO

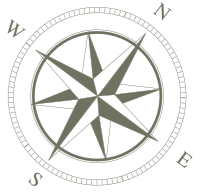
BY
KHAKHAMYAN
heritage



note

1. The curving and bending walls help to visually enlarge the space and bring a sense of flow and energy.
2. Our professional team draws the interior walls of the apartment in accordance with international standards, ensuring proper space distribution.
3. The interior major walls are missing due to the building's professional design. This provides you the freedom to lay the walls in any way you wish

Ivy 3 - floor 3



apt. 6 | 130 m² | SOLD

1. living room - 30 m²
2. balcony - 11 m²
3. kitchen - 9 m²
4. hall - 18 m²
5. guest bathroom - 4 m²
6. bedroom - 15 m²
7. bathroom - 5 m²
8. master suite - 17 m²
9. bathroom - 6 m²
10. walk-in closet - 5 m²

apt. 7 | 97 m² | SOLD

1. living room - 33 m²
2. balcony - 12 m²
3. kitchen - 8 m²
4. hall - 10 m²
5. guest bathroom - 4 m²
6. bedroom - 20 m²
7. bathroom - 7 m²

common areas

1. stairway - 20 m²
2. technical room - 4 m²
3. hall - 6 m²

apt. 8 | 171 m²

1. living room - 40 m²
2. balcony - 10 m²
3. kitchen - 8 m²
4. hall - 15.5 m²
5. guest bathroom - 5 m²
6. bedroom - 14.5 m²
7. bedroom - 12 m²
8. bathroom - 6.5 m²
9. master suite - 34.5 m²
10. bathroom - 7 m²
11. storage room - 3.5 m²
12. balcony - 6 m²



AMANO

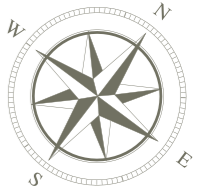
BY
KHAKHAMYAN
heritage



note

1. The curving and bending walls help to visually enlarge the space and bring a sense of flow and energy.
2. Our professional team draws the interior walls of the apartment in accordance with international standards, ensuring proper space distribution.
3. The interior major walls are missing due to the building's professional design. This provides you the freedom to lay the walls in any way you wish

Ivy 3 - floor 4



apt. 9 | 120 m² | SOLD

1. living room - 18 m²
2. balcony - 15 m²
3. kitchen - 8 m²
4. hall - 19 m²
5. guest bathroom - 3 m²
6. bedroom - 14 m²
7. master suite - 29 m²
8. bathroom - 5 m²

apt. 11 | 150 m² | SOLD

1. living room - 35.5 m²
2. balcony - 7 m²
3. kitchen - 14 m²
4. hall - 22 m²
5. bedroom - 10 m²
6. bathroom - 5 m²
7. master suite - 27.5 m²
8. bathroom - 6 m²
9. storage room - 5 m²
10. balcony - 8 m²

apt. 10 | 108 m²

1. living room - 23 m²
2. balcony - 10.5 m²
3. kitchen - 11.5 m²
4. hall - 13 m²
5. guest bathroom - 3 m²
6. bedroom - 13 m²
7. bedroom - 18 m²
8. bathroom - 6 m²
9. walk-in closet - 5.5 m²

common areas

1. stairway - 20 m²
2. technical room - 4 m²
3. hall - 6 m²



AMANO

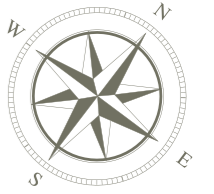
BY
KHAKHAMYAN
heritage



note

1. The curving and bending walls help to visually enlarge the space and bring a sense of flow and energy.
2. Our professional team draws the interior walls of the apartment in accordance with international standards, ensuring proper space distribution.
3. The interior major walls are missing due to the building's professional design. This provides you the freedom to lay the walls in any way you wish.

Ivy 3 - floor 5



apt. 12 | 134 m²

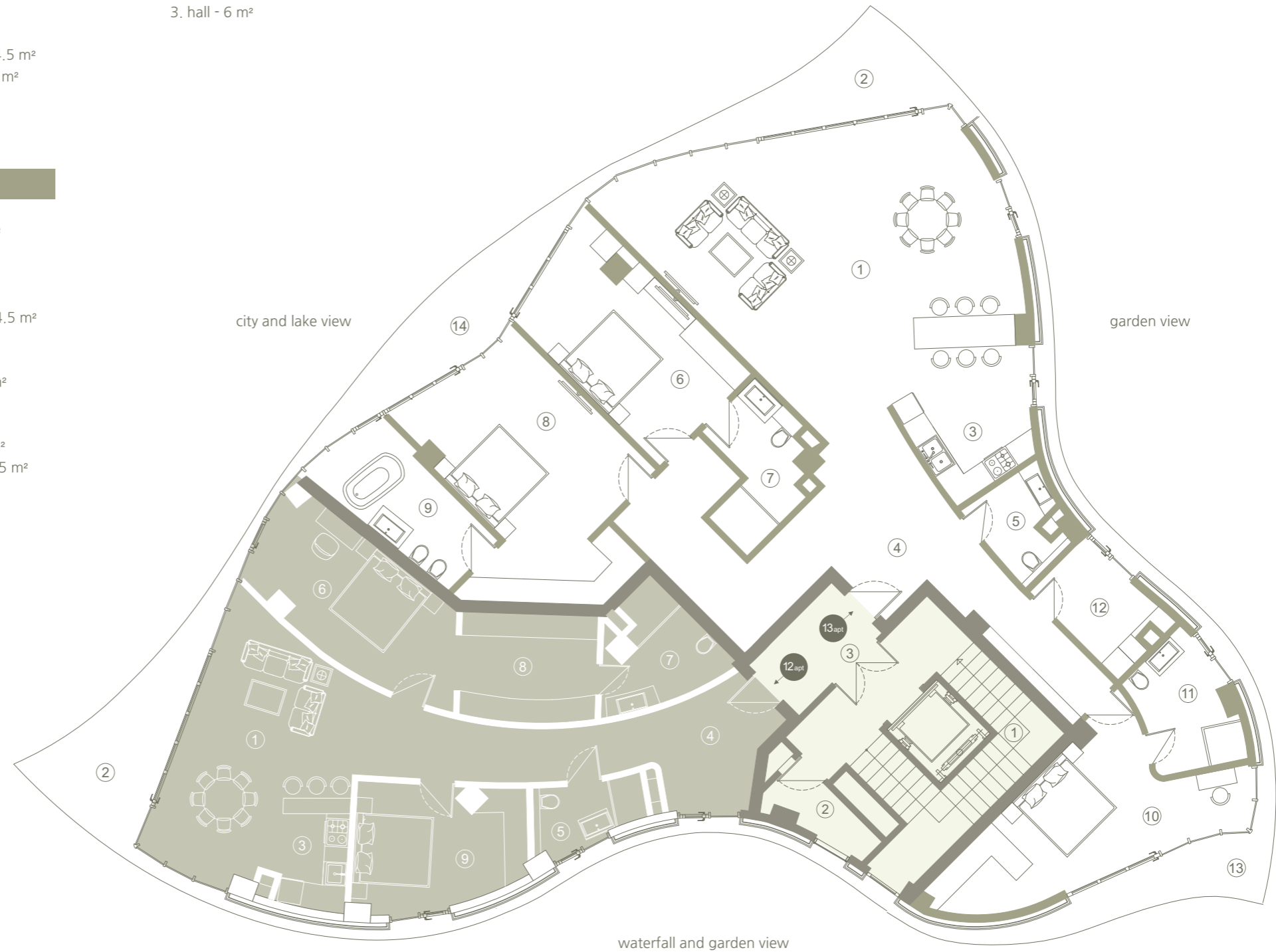
1. living room - 26 m²
2. balcony - 20.5 m²
3. kitchen - 8 m²
4. hall - 17 m²
5. guest bathroom - 4.5 m²
6. master suite - 26.5 m²
7. bathroom - 7 m²
8. bedroom - 13.5 m²

common areas

1. stairway - 21 m²
2. technical room - 4 m²
3. hall - 6 m²

apt. 13 | 166 m²

1. living room - 54 m²
2. balcony - 16.5 m²
3. kitchen - 12 m²
4. hall - 34 m²
5. guest bathroom - 4.5 m²
6. bedroom - 10 m²
7. bathroom - 8 m²
8. master suite - 27 m²
9. bathroom - 10 m²
10. bedroom - 22 m²
11. bathroom - 7.5 m²
12. storage room - 6.5 m²
13. balcony - 14 m²
14. balcony - 12.5 m²



note

1. The curving and bending walls help to visually enlarge the space and bring a sense of flow and energy.
2. Our professional team draws the interior walls of the apartment in accordance with international standards, ensuring proper space distribution.
3. The interior major walls are missing due to the building's professional design. This provides you the freedom to lay the walls in any way you wish

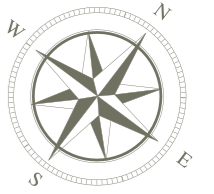
Ivy 3 - floor 6

apt. 14 | 362 m²

- 1. living room - 45 m²
- 2. balcony - 83 m²
- 3. dining room - 17 m²
- 4. kitchen - 17.5 m²
- 5. hall - 17.5 m²
- 6. corridor - 11.5 m²
- 7. guest bathroom - 2 m²
- 8. bedroom - 15.5 m²
- 9. bathroom - 5 m²
- 10. master suite - 44 m²
- 11. bathroom - 14 m²
- 12. walk-in closet - 5.5 m²
- 13. bedroom - 27 m²
- 14. bathroom - 6.5 m²
- 15. fireplace area - 10 m²
- 16. laundry room - 6.5 m²
- 17. swimming pool - 18 m²

common areas

- 1. stairway - 13 m²
- 2. technical room - 6 m²



AMANO

BY
KHAKHAMYAN
heritage



note

- 1. The curving and bending walls help to visually enlarge the space and bring a sense of flow and energy.
- 2. Our professional team draws the interior walls of the apartment in accordance with international standards, ensuring proper space distribution.
- 3. The interior major walls are missing due to the building's professional design. This provides you the freedom to lay the walls in any way you wish